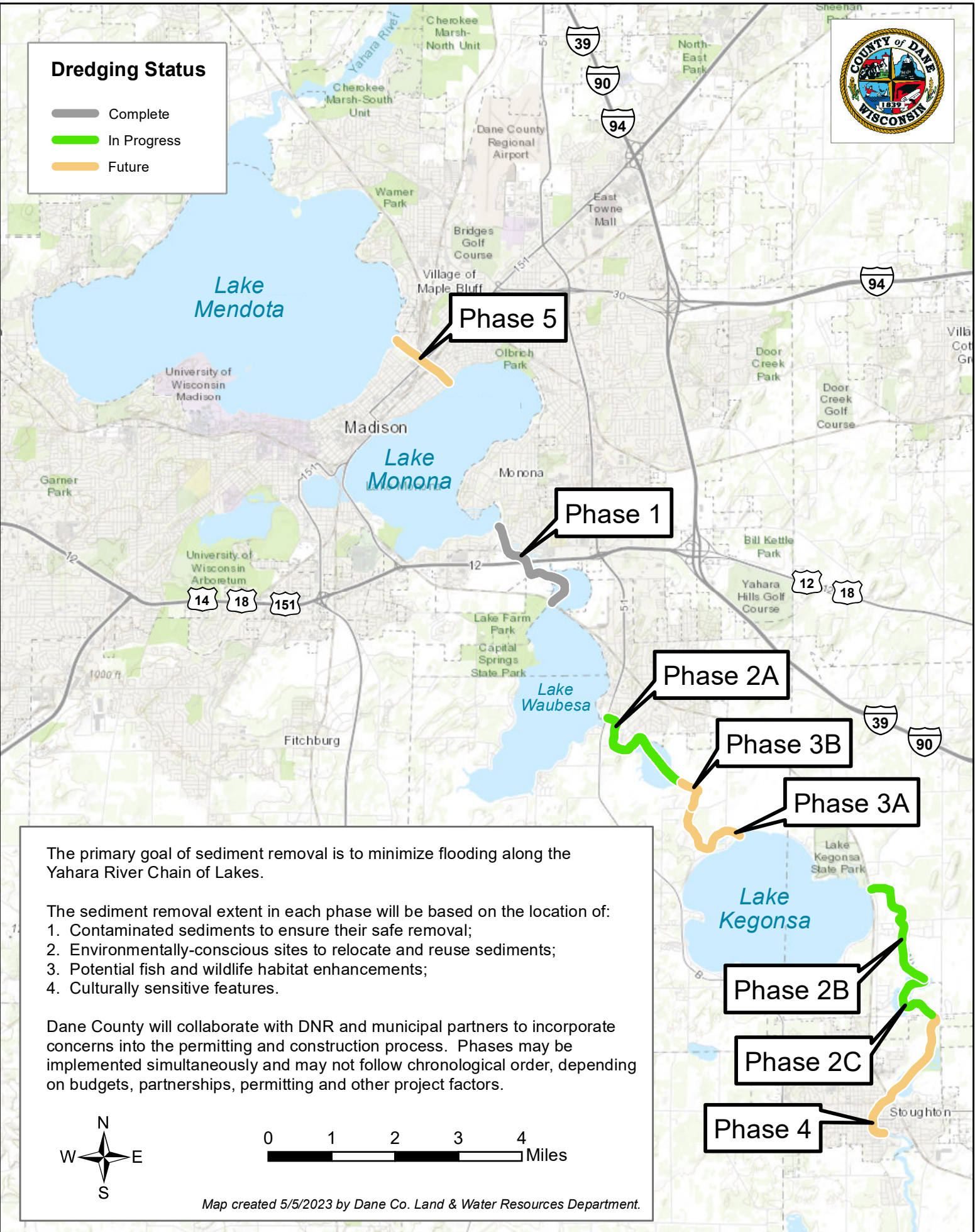


Sediment Removal Phases on the Yahara River



Dredging Status

- Complete
- In Progress
- Future



Phase 5

Phase 1

Phase 2A

Phase 3B

Phase 3A

Phase 2B

Phase 2C

Phase 4

The primary goal of sediment removal is to minimize flooding along the Yahara River Chain of Lakes.

The sediment removal extent in each phase will be based on the location of:

1. Contaminated sediments to ensure their safe removal;
2. Environmentally-conscious sites to relocate and reuse sediments;
3. Potential fish and wildlife habitat enhancements;
4. Culturally sensitive features.

Dane County will collaborate with DNR and municipal partners to incorporate concerns into the permitting and construction process. Phases may be implemented simultaneously and may not follow chronological order, depending on budgets, partnerships, permitting and other project factors.

